

Budburst-Nativars Pollinator Groups

There are thousands of species of pollinators. For the Budburst-Nativars project, we have identified seven categories for you to use when collecting data. If you are able to identify floral visitors more specifically within these categories, please include that information in the notes section.

Hummingbirds



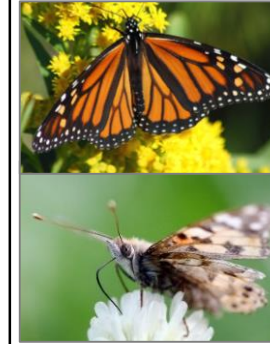
- Small colorful birds with long bills and tongues used to feed on nectar
- Hover in mid-air, rapid wing-flapping rates produced humming sound

Beetles



- Front wings modified to form hard wing covers
- Antennae long and slender or clubbed at the tips

Butterflies & Moths



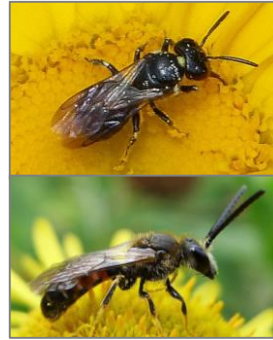
- Two pairs of large membranous wings largely or entirely covered with colorful scales
- Mouthparts adapted for sucking (proboscis) usually in the form of a coiled tube

Honey bees



- Skin of abdomen is yellow/orange
- Abdomen striped, torpedo-shaped
- Pollen carried as moistened pellet in “baskets” on hind legs
- ~1-1.5 cm

Small bees



- Two pairs of wings
- Eyes on sides of their heads (heart-shaped appearance)
- Bodies hairy, often loose mass of dry pollen grains clinging to hairs
- <1 cm

&

Flies



- One pair of wings
- Short, stubby antennae in a ‘V’ shape
- Large, compound eyes (helmet-like appearance)
- No pollen-carrying structures on legs

Bumble bees



- Large, furry bodies
- Mostly black with stripes of yellow, white, or even bright orange
- Noisy, bumbling flight
- Stores pollen in pellet in hind leg pollen “baskets”
- >1 cm

Large bees



- Two pairs of wings
- Eyes on sides of their heads (heart-shaped appearance)
- Bodies hairy, to carry pollen
- >1 cm



&

Wasps



- Two pairs of wings
- Eyes on sides of their heads (heart-shaped)
- Bodies slender, pointed, shiny
- Little to no hair, no adaptations to carry pollen

Budburst-Nativars: Bees

North America is home to a great diversity of native bees (~4,000 species) as well as a few non-native bees (~30 species, including the European honey bee). Here are a few examples of groups of native bees you might encounter while conducting pollinator observations.

Metallic green sweat bees



Small carpenter bee



Large carpenter bee



Long-horned bee



Digger bee



Small sweat bee



Mason bee



Leafcutter bee



Sweat bee



Cuckoo bee

